

**KEY NOTES**

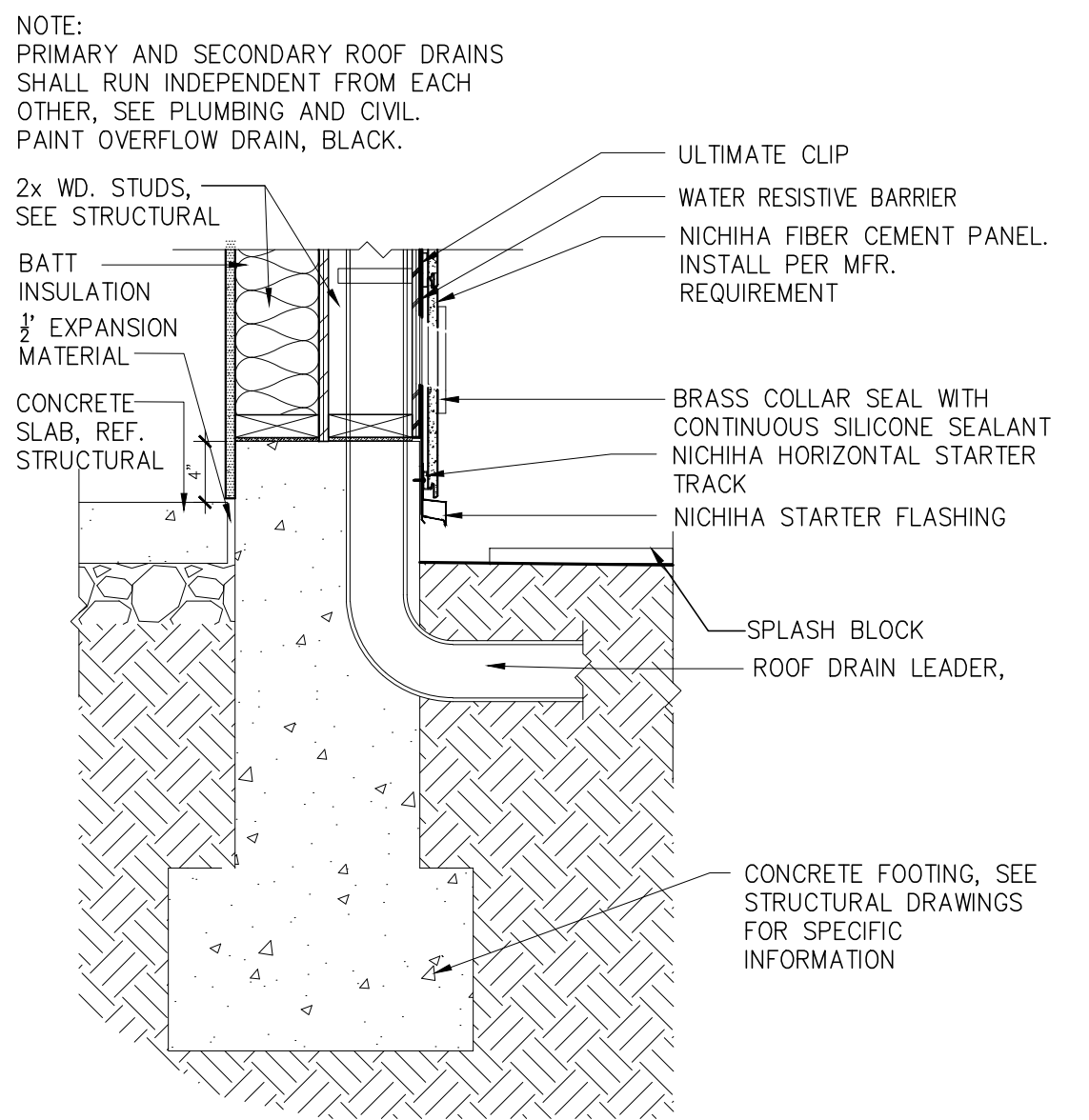
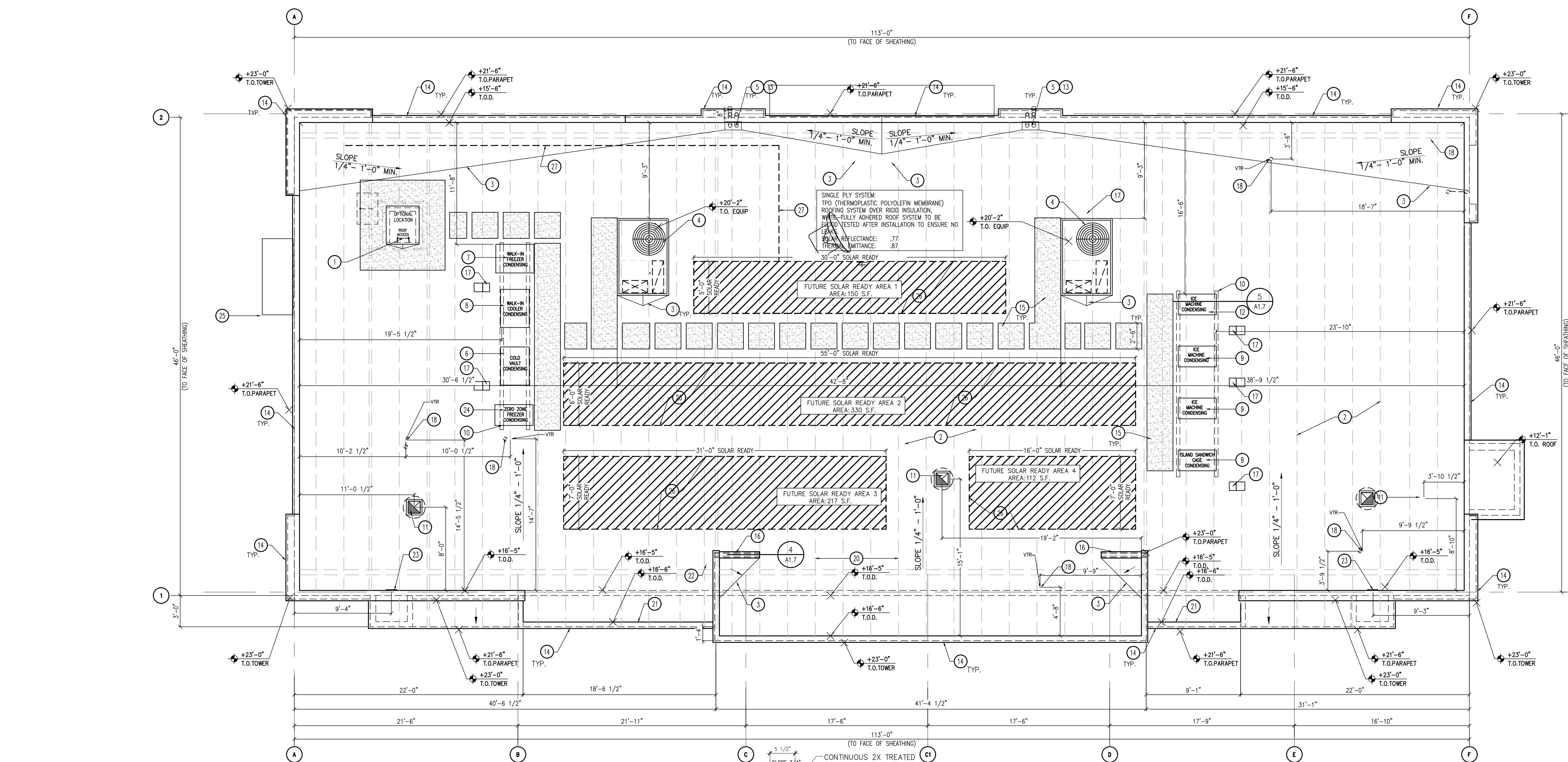
- METAL ROOF ACCESS LADDER WITH SECURITY DOOR BELOW.
- TPO (THERMOPLASTIC POLYOLEFIN MEMBRANE) ROOFING SYSTEM OVER RIGID INSULATION, WHITE-FULLY ADHERED.
- TAPERED INSULATION DRAINAGE VALLEY CRICKET, MINIMUM SLOPE 1/4" PER FOOT.
- ROOF TOP HVAC UNIT.
- COMBINATION ROOF DRAIN / OVERFLOW DRAIN.
- COLD VAULT CONDENSING UNIT.
- WALK-IN FREEZER CONDENSING UNIT.
- WALK-IN COOLER CONDENSING UNIT.
- ICE MACHINE CONDENSING UNIT.
- 4"x4" PRE-TREATED WOOD SLEEPER CONDENSER SUPPORT WITH PROTECTION PAD. PROVIDE EQUIPMENT STRAPS TO SECURE CONDENSERS TO SLEEPERS.
- EXHAUST FAN UNITS.
- ISLAND SANDWICH CASE CONDENSING UNIT.
- EMERGENCY OVERFLOW ROOF DRAIN TAIL PIECE. EXTEND 4" BEYOND FINISH SURFACE.
- PRE-FINISHED GALVANIZED METAL COPING, SEE EXTERIOR ELEVATIONS.
- 30" WIDE WALKING PATH FOR EQUIPMENT ACCESS. "ULTRA PLY TPO" WALKWAY PAD BY FIRESTONE OR EQUAL. INSTALL PER MANUFACTURER INSTRUCTIONS. VERIFY PATH LOCATION WITH CIRCLE K PROJECT MANAGER.
- PARAPET BRACING AS REQUIRED.
- ROOF JACK FOR REFRIGERANT LINE.
- VTR LOCATION.
- NOT USED.
- PRE-FAB WOOD TRUSSES.
- TPO ROOF AT PARAPET TYP.
- FREEZELESS ROOF HYDRANT.
- RUSKIN LOUVER VENT # ELF6350DMP OR ALTERNATE-GIBRALTAR GLG1212G.
- ZERO ZONE FREEZER CONDENSING UNIT.
- ALUMINUM ANCHING WITH SUPPORT RODS BY CIRCLE K VENDOR. PROVIDE BLOCKING IN EXTERIOR WALL FOR ANCHING AND SUPPORTS. GC PROVIDE WATERTIGHT SEAL/FLASHING AT ALL WALL OPENINGS AND ATTACHMENT CONNECTIONS.
- FUTURE SOLAR PANELS AREA, 15% OF ROOF AREA PER CEC SECTION 110.10 (b).
- FUTURE SOLAR POWER PATHWAY.

**GENERAL NOTES**

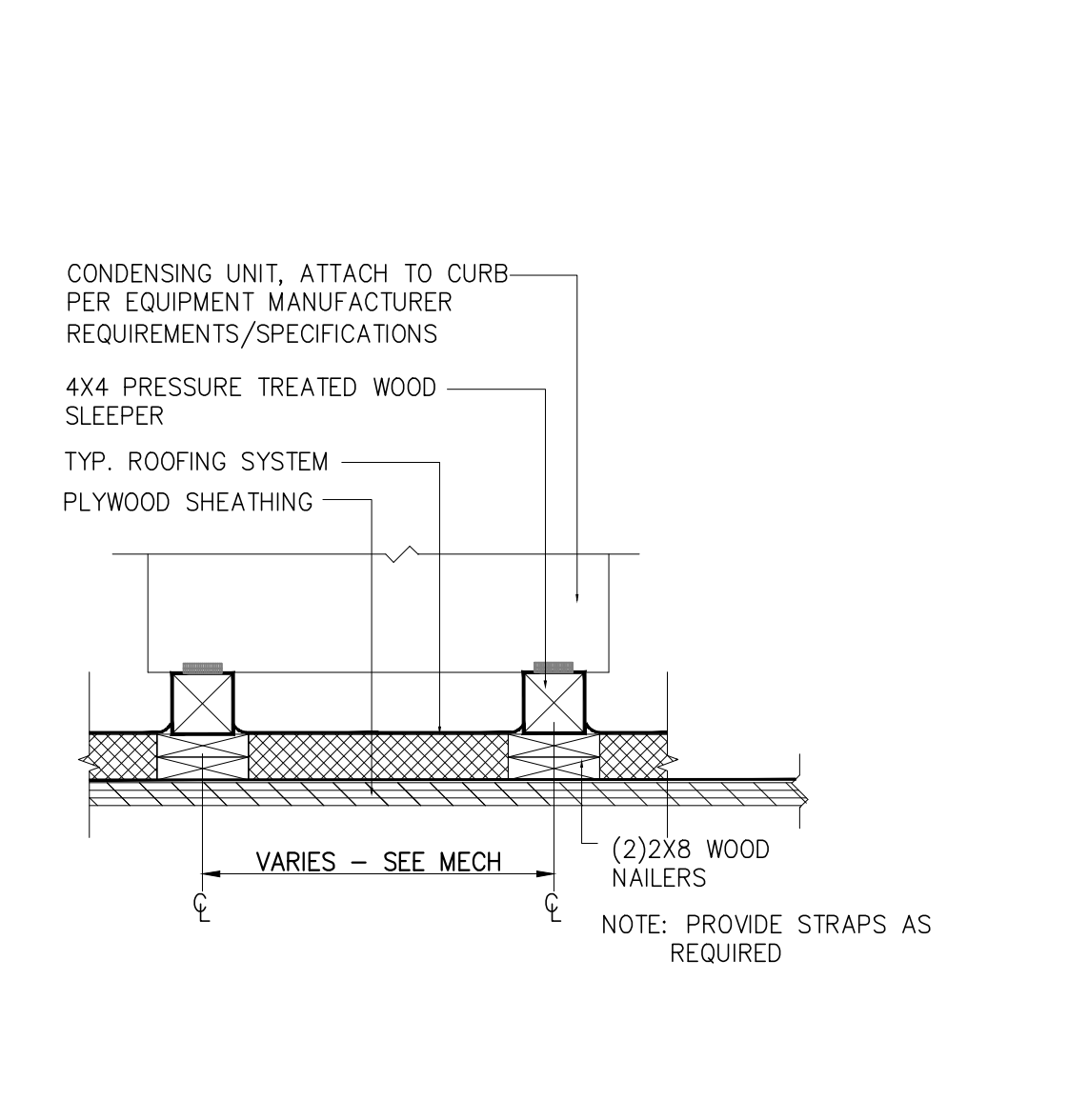
- SEE BUILDING ELEVATIONS FOR PARAPET HEIGHTS.

**SINGLE PLY ROOFING SPECIFICATION**

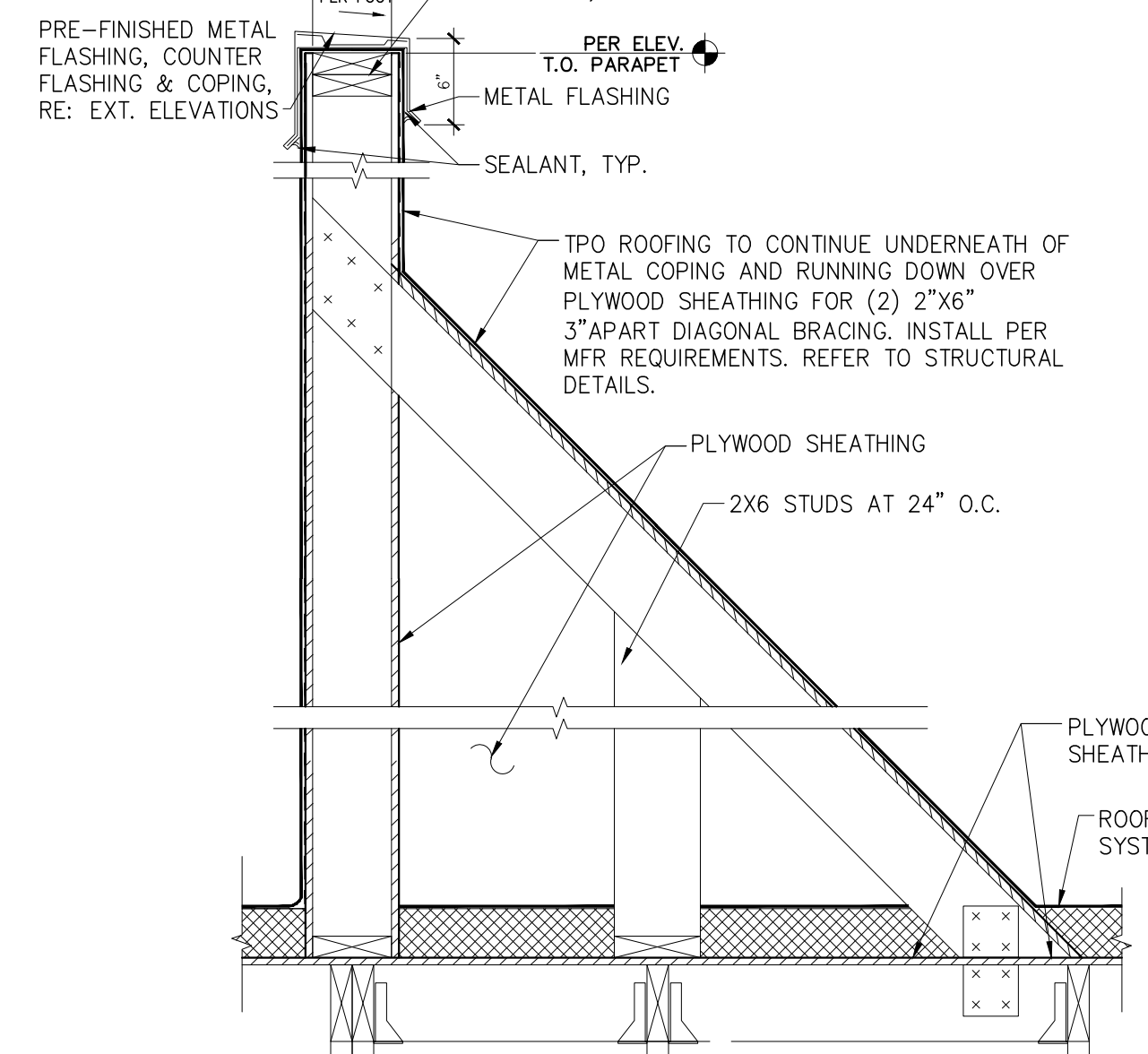
SINGLE PLY ROOFING SPECIFICATION  
 FIRESTONE  
 TPO-60ML (THERMOPLASTIC POLYOLEFIN MEMBRANE) FULLY ADHERED TPO WHITE ASTM D6878  
 CLASSIFICATION: UL CLASS: A FM CLASS: 1  
 -45°F PER DESIGN  
 MAX. SLOPE 1"  
 DECK: NON-COMBUSTIBLES AND COMBUSTIBLE  
 INSULATION: POLYSTYRENE INSULATION BOARD ASTM C1289  
 LTR = R-15. INSTALLED IN TWO LAYERS WITH STAGGERED JOINTS  
 TAPERED INSULATION: FACTORY TAPERED BOARDS FABRICATED TO PRODUCE SLOPE OF 1/4" PER FOOT. SLOPE TOWARDS DRAIN.  
 CRICKETS: PROVIDE CRICKETS TAPERED. EDGE STRIPS WHERE INDICATED.  
 AUXILIARY MATERIALS  
 SHEET FLASHING: SAME SHEET AS FIELD SHEET  
 BONDING ADHESIVE: MANUFACTURERS STANDARD BONDING ADHESIVE  
 METAL TERMINATION BARS: PRE-DRILLED STAINLESS STEEL OR ALUMINUM BARS  
 FASTENERS: FACTORY-COATED STEEL FASTENERS AND METAL PLATES MEETING CORROSION-RESISTANCE PROVISIONS OF FMG 4470  
 MISCELLANEOUS: PROVIDE POURABLE SEALER, PREFORMED CONES, PREFORMED INSIDE AND OUTSIDE CORNER FLASHING, T-JOINT COVERS, TERMINATION REGLETS, AND COVER STRIPS.  
 WALK-WAY PADS: FACTORY FORMED, NON-POROUS, HEAVY-DUTY SLIP RESISTANT PADS OR ROLLS ACCEPTABLE TO MEMBRANE ROOFING SYSTEM MANUFACTURER.  
 ROOF ASSEMBLY SHALL BE INSTALLED PER MANUFACTURER RECOMMENDATIONS.  
 PROVIDE PATCH OVER ALL T-LAP JOINTS IN THE ROOF.



**6 ROOF DRAIN LEADER**  
 1" = 1'-0"

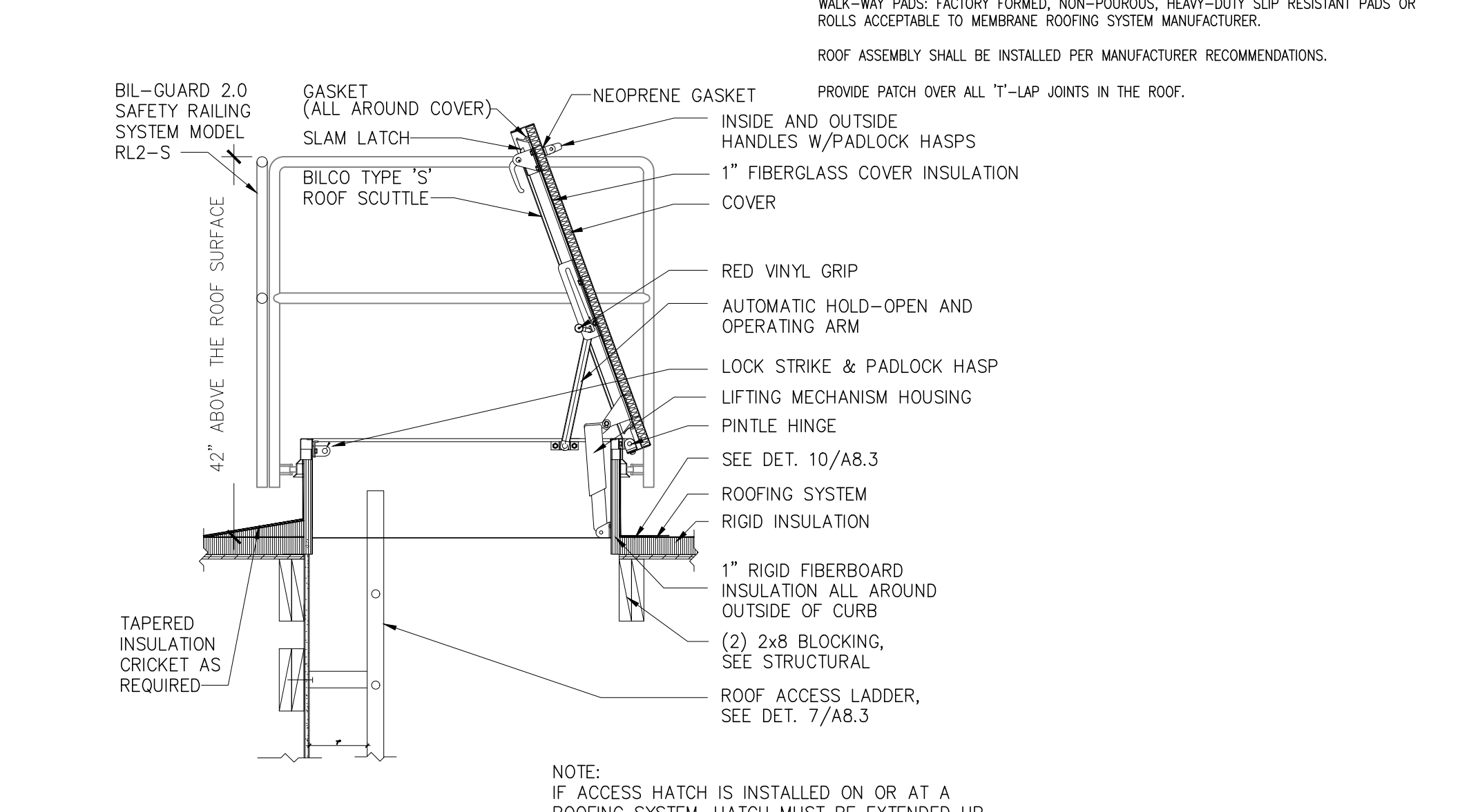


**5 SLEEPER DETAIL @ CONDENSERS**  
 1" = 1'-0"



**4 PARAPET DETAIL**  
 1" = 1'-0"

**1 ROOF PLAN**  
 SCALE: 3/16" = 1'-0"



**2 ROOF SCUTTLE**  
 3/4" = 1'-0"